

*Symphony*<sup>®</sup>

Lithotomy Positioning  
& Transfer Solutions



Powered by *AirDrive*  
TECHNOLOGY



positioning  
patients for life.<sup>®</sup>

[www.Qfix.com](http://www.Qfix.com)

# Lithotomy *AirShuttle*<sup>™</sup>



## Maximize Workflow Flexibility

The patient is positioned once on the Lithotomy AirShuttle prior to insertion and then transferred easily, safely, and stably for imaging, treatment, and recovery.

## Simplified Workflow & Improved Experience

- Integrated surgical rails are compatible with CT and MR imaging and allow stirrups, steppers, and other accessories to be quickly attached
- The leg extension supports the patient's legs for transfers and imaging and is easily removed to provide access to the perineum
- Provides stable patient support and reduced patient motion during transfers
- Clinicians report reduced applicator motion and improved patient comfort when using AirDrive technology over conventional patient transfers
- Patient transfers are performed with only two people, reducing staffing needs and allowing team members to focus on other responsibilities
- Removable, cleanable pads on the transfer device provide patient comfort from insertion through treatment

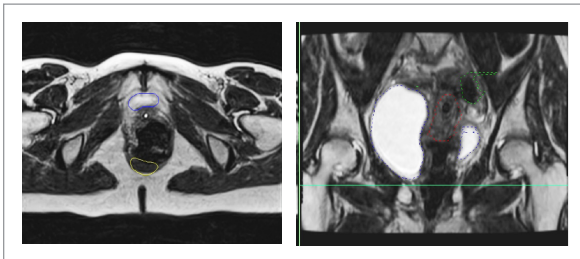


Lithotomy AirShuttle with AirDrive Caddie

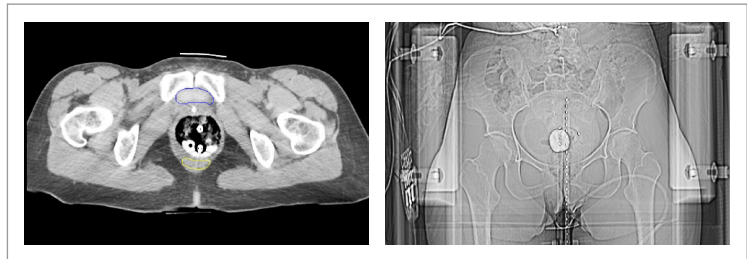


Lithotomy AirShuttle with AirDrive Trolley

## MR & CT Images Using Lithotomy AirShuttle



Low-artifact MR images.



Low-artifact CT images.



# Typical Brachytherapy Workflow

Insert



The patient is prepped for insertion directly on the Lithotomy AirShuttle. Once the patient is positioned in the stirrups, the leg extension is removed to gain access to patient anatomy. After insertion, patient can be easily transferred and transported with an AirDrive system.

Image



AirShuttle devices and AirDrive systems are compatible with MR, CT, and other X-ray environments. The patient is imaged directly on the Lithotomy AirShuttle.

Transfer

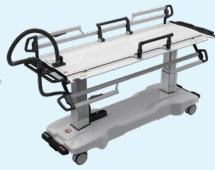


The AirDrive system safely transfers patients without repositioning. Patient stability and smooth transfer minimize movement of soft tissues and applicators.

Treat



The patient is then treated on the Lithotomy AirShuttle, which has been the transfer platform during the entire workflow.



**Lithotomy AirShuttle Package  
with AirDrive Trolley  
RT-5100-500**

Included Accessories:

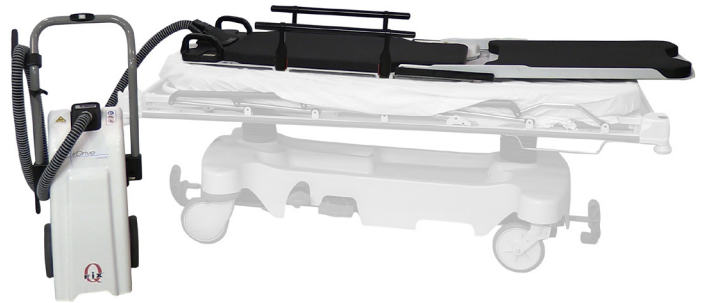
- (2) AirShuttle Transfer Handles
- (1) Brachytherapy Insertion Overlay
- (1) IV Pole
- (1) Lithotomy Air Bearing (Spare)



**Lithotomy AirShuttle Package  
with AirDrive Caddie  
RT-5100-500S**

Included Accessories:

- (2) AirShuttle Transfer Handles
- (1) Lithotomy Air Bearing (Spare)



**Lithotomy AirShuttle**



**RT-5100-05**  
*Lithotomy AirShuttle*

*Lithotomy AirShuttle  
shown with leg  
extension removed*

**Example Accessories**

**RT-5100-51ST**  
*Stirrups (pair)*



**RT-5100-51CU**  
*SpringLoc™ Clamp, US*

**RT-5100-51CE**  
*SpringLoc™ Clamp, Europe*



2008078\_EN\_C

This brochure contains information about products which may or may not be available in particular countries. Each country has specific laws and regulations governing the commercialization of medical devices and the communication of information regarding medical devices in printed and digital media. Products appearing in this brochure or on our website may or may not have received approval, clearance, or marketing authorization by a governmental regulatory body in any particular country, or may have received approval, clearance, or marketing authorization for different indications and restrictions in different countries, or may be for investigational use only. A product's appearance in this brochure should not be construed as a solicitation or promotion for said product, nor any indication which is not authorized by the laws and regulations of the country where the reader resides. Symphony is a registered trademark of Qfix. Lithotomy AirShuttle, AirDrive Trolley, AirDrive Caddie, AirDrive, and AirShuttle are trademarks of Qfix. SpringLoc is a trademark of SchureMed. The Symphony, Lithotomy AirShuttle, AirDrive Trolley, and AirDrive Caddie products or their accessories or components are patented or patent(s) pending in the US and/or elsewhere by Qfix or licensed by Qfix. This list may not be all inclusive.



Qfix  
440 Church Road  
Avondale, PA 19311  
www.Qfix.com  
+1 800.526.5247  
sales@Qfix.com